

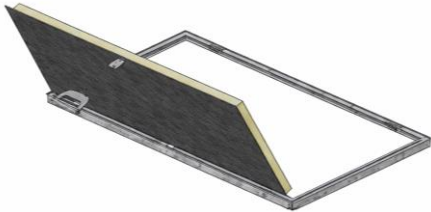


Elkington

# Axess Smoke Shaft Hatch

Facade hatch for safe and controlled smoke evacuation in hard-to-reach areas

## Product Sheet



Axess smoke shaft hatch is specially designed for installation in smoke shafts and ensures safe, controlled smoke evacuation in the event of fire. The hatch is bottom-hinged, held closed by magnets, and opened manually from above using a steel cable.

*Please Note that this is a general product sheet and that specific details may vary between models, materials and options.*

## Specifications

### Material & technical data

- Aluminum, hot-dip galvanized steel, or stainless steel (AISI 304/316).
- Vertical, concealed fixing through the frame.

### Options & Customizations

- Steel cable for opening. Standard length 2 m. Can be customized to required length.
- Ventilation grille.
- Insulated lid (mineral wool board) for temperature-sensitive installations.

### Dimensions

- Bespoke sizes available.

### Opening methods

- The hatch is bottom-hinged and held closed by magnets.
- To open, pull the cable to release the hatch.

### Area of use

- Smoke shafts below ground level.
- Hard-to-access areas where standard manual opening is not possible.

