



Elkington

# Axess Smoke Shaft Hatch

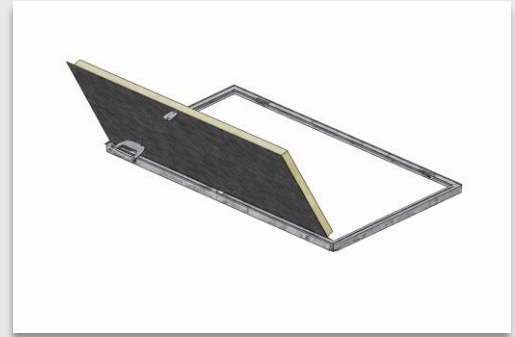
Facade hatch for safe and controlled smoke  
evacuation in hard-to-reach areas

## Operation & Maintenance

### Safety checks before use

Before operating the unit, the following checks should be performed:

- Check that the area around the door is clear of obstacles.
- Ensure that no people or objects are in the path of the door during operation.
- Check that there is no visible damage or loose parts.



### Cleaning the door and surfaces

- The door should be opened and cleaned at least once annually.
- Clean with water and a mild detergent.
- Use a soft cloth or sponge – avoid harsh cleaning products that can scratch the surface.
- Dry the surface after cleaning to avoid limescale and corrosion.

### Inspection of Clearances and Magnets

- Ensure that the space between the hatch and the frame is free from gravel, dust, and other debris.
- Regularly check the function of the magnets.
- Regularly inspect the steel cable attachment, both at the hatch and at ground level.

*Always follow the specific operation and maintenance instructions included with your order. Instructions may vary depending on model, material, and selected options. This document provides general recommendations for the safe and correct operation and maintenance of the hatch.*